



ALIAS SHALL NOT BE LIABLE FOR TECHNICAL OR EDITORIAL ERRORS OR OMISSIONS CONTAINED HEREIN NOR FOR INCIDENTAL OR CONSEQUENTIAL DAMAGES RESULTING FROM THE FURNISHING, PERFORMANCE OR USE OF THIS MATERIAL.

It is the policy of Alias Limited to enforce any and all rights relating to protection of this information. The information contained in this document is proprietary in nature and may not be reproduced, copied or divulged in whole or in part without the prior written consent of Alias Limited. This document has been provided pursuant to the terms of a contract or confidentiality agreement. Unauthorised distribution or disclosure of its contents is a violation of that contract or agreement and persons doing so may be liable for penalties as provided by law.

COPYRIGHT

Copyright © 1991-2001 Alias Limited Industrial Software Products.

Stuart Road,
Manor Park,
Runcorn,
Cheshire,
WA7 1TS,
United Kingdom.
Telephone: +44 (0) 1928 579311
Fax: +44 (0) 1928 579389
E-mail: info@alias.ltd.uk
Web: www.alias.ltd.uk

TRADEMARKS

I-Sketch, I-Sketch Classic, I-Sketch Field, I-Convert, I-Export, I-Run, PLANTGEN, ISOGEN and ISOGEN are registered trademarks of Alias Limited.

All other trademarks are the property of their respective owners.

Information Notes

Notes like this

FIELD RUN PIPELINE

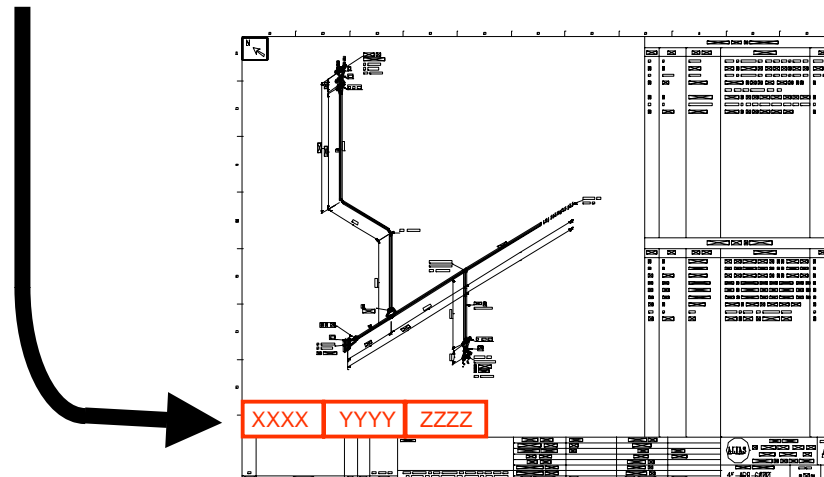
can be generated

They operate in a similar manner to Detail Sketches and may be specific to -

- The Pipeline
- A Particular Pipe Spool
- A Component

The basic functionality is as follows -

- 1) Information Notes are User Defined and constructed in AutoCAD or MicroStation - just like Detail Sketches are
- 2) The file format may be -
 - AutoCAD - DXF
 - MicroStation - DGN Cell (Held in the same library as Detail Sketches)
- 3) All notes are automatically placed along the bottom of the iso - from left " right
- like this



To define the Notes this section is needed in the DDF -

I N F O R M A T I O N - N O T E

F I L E - F O R M A T *data* (where *data* = DXF or ISOGEN (for DGN use ISOGEN))

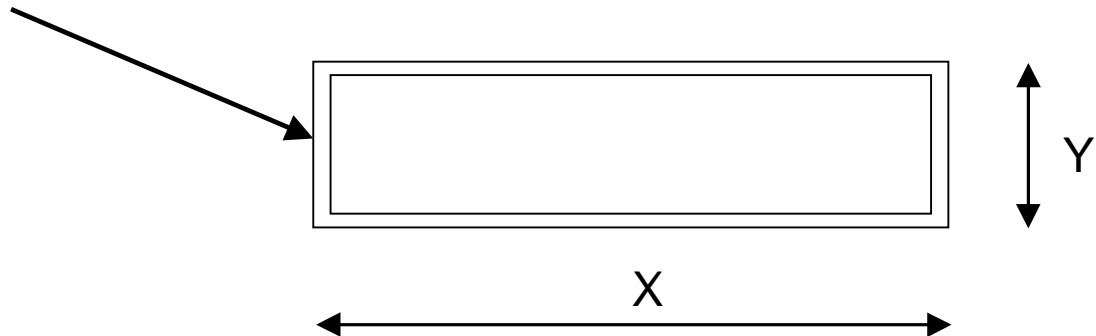
N O T E - S I Z E ' X ' ' Y '

e.g.

I N F O R M A T I O N - N O T E

F I L E - F O R M A T DXF

N O T E - S I Z E 35 18



There are two types of Information Note -

■ General Notes

These Notes apply to the whole of the pipeline and are output on all the isometrics for a pipeline

Specific Notes

These Notes may apply to either a specific Component or Pipe Spool

π Although a Specific Note may be added at more than one location on a Pipeline - it will only be produced once on the isometric

π

π

π

Location of Note Cells / Files

The files for General and Specific Notes must exist :-

- For DXF - in the same directory as the Detail Sketches
- For DGN - in the Detail Sketches Cell library



When adding in Notes and Detail Sketches - ISOGEN checks that the typed in file name does exist in the library

Item Note Identification

The two types of Note must have identifying file / cell name characters

- For General Notes the default identifying suffix characters are _N
- For Specific Notes the default identifying suffix characters are _S

Some example file and cell names are -

FLD_N	General Note	- DGN
FLD_N.DXF	“ “	- DXF
CEML_S	Special Note	- DGN
CEML_S.DXF	“ “	- DXF

Note that DGN Cell names are limited to 6 characters

Item Note Identification Contd.

These default Note file / cell identifiers may be changed if required through the use of AText

Atext No.	Default Setting	Used for
-541	_N	General Notes
-542	_S	Specific Notes

So, if you wanted to change the file / cell identifier for General Notes from _N to _G - set AText -541 to _G

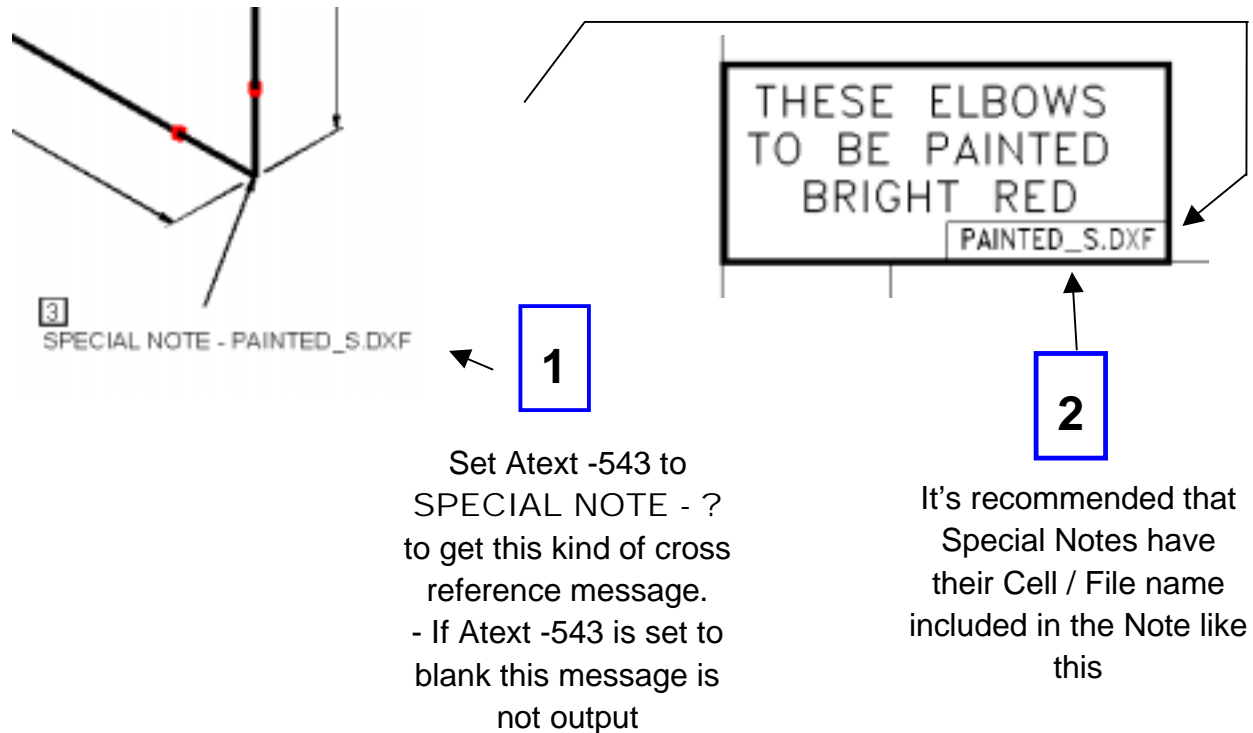
Then you get identifiers like this - e.g.

FLD_G	General Note	- DGN
FLD_G.DXF	“ “	- DXF

Cross References on the Isometrics

Specific Notes

If you want a Cross Reference between the probed in position of the Note and the actual Note itself - you must do actions 1 and 2



General Notes - Don't have a Cross Reference because none is needed

- However you may still want to include the Cell / File name in the Note as shown above - for identification purposes

Location Of Information Notes On The Isometric

Information Notes may be positioned on the isometric in 2 different ways -

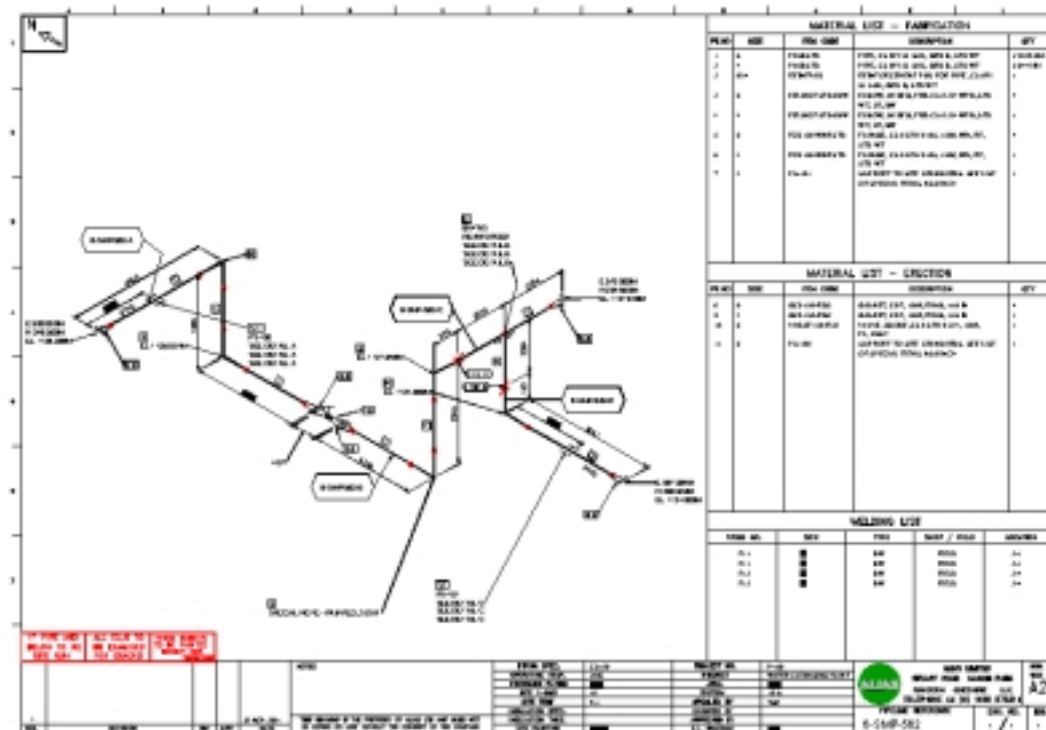
1. Along the bottom of the drawing
2. Output to a completely separate isometric containing only Detail Sketches

The required method is User determined and is specified in the DDF

Location Of Information Notes On The Isometric

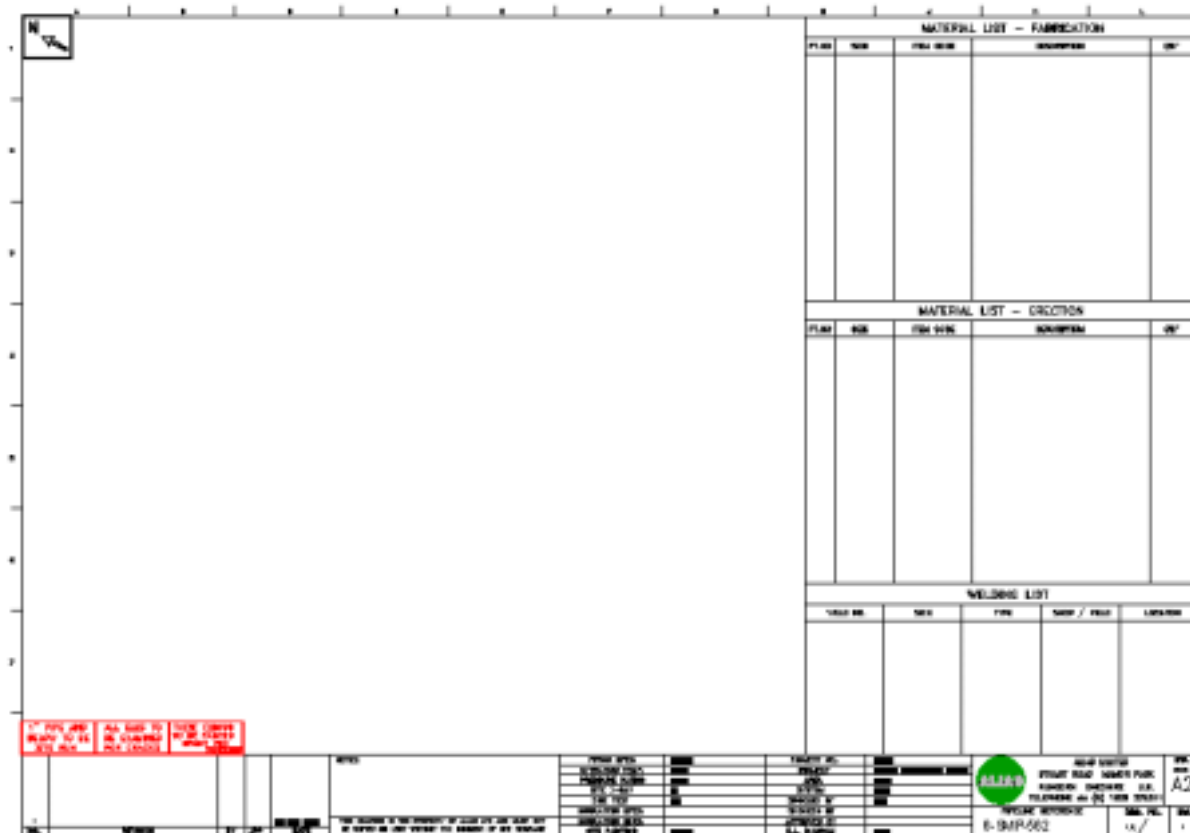
Method 1 - Along the bottom of the drawing

The actual Notes location is determined automatically by ISOGEN



Location Of Information Notes On The Isometric

Method 2 - Output to a completely separate isometric



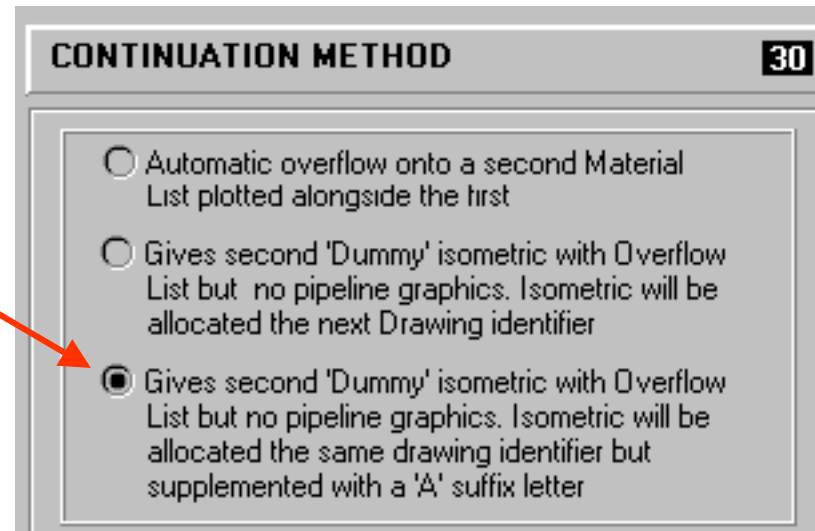
The drawing template includes the following sections:

- North Arrow:** Located in the top left corner.
- MATERIAL LIST - FABRICATION:** A table with columns for ITEM, QTY, DIM, and DESCRIPTION.
- MATERIAL LIST - ORCUTON:** A table with columns for ITEM, QTY, DIM, and DESCRIPTION.
- WELDING LIST:** A table with columns for WELD NO., SIZE, TYPE, WELD / FILL, and LOCATION.
- Notes:** A section for handwritten or typed notes.
- Technical Specifications:** A section for material and welding specifications.
- Project Information:** A section for project details, including a title block with the ALIAS logo, project name, and drawing number.

With this method the Information Notes are generated on a separate dummy drawing like this

Requirements to set up Positional Method 2

1. In the Options Editor make this setting for O.S. 30



2. Make this entry in the I NFORMATI ON-NOTES section of the DDF -
NOTE-POSI TI ON-OVERFLOW - like this -

I NFORMATI ON-NOTE

NOTE-POSI TI ON-OVERFLOW

FILE-FORMAT DXF

NOTE-SIZE 35 18